

SELECTED PROJECTS

TEAM MEMBERS /

Ivo Skelin, i.a.,
manager

Hrvojka Skelin, d.i.a.,
partner

Maja Vukušić, d.i.a., cert.arch.,
project leader

Mirko Majić, d.i.a.,
project leader

Zoran Zelić, d.i.a.,
project collaborator

Hana Golubovac Ehrenfreund, d.i.a.,
project collaborator

Marko Đuran, građ.teh.,
3d vizualizer

Mirna Bobinac,
office manager

Irena Stanko,
administrator



photo: Mirna Horvat

FORMER TEAM MEMBERS /

Andre Castro Vasconcelos, d.i.a.,
project collaborator

Tanja Kričkić, d.i.a.,
partner

Iva Šilović Grabovac, d.i.a., cert.arch.,
partner

Goran Obranović, d.i.a., cert.arch.,
project leader

Petra Kelentrić, mba,
office manager

In order for Out-Of-The-Box architecture to be created it is necessary to set up the box and then get out of it. It is necessary to set up a procedures protocol; a work process that abides by the laws and professional standards; a work process that sets up, in detail and unambiguously, work procedures, control systems and action protocols crucial for safe navigation through the complexities of the design, permitting and construction processes. A procedure needs to be set up that will minimize the possibility of making a mistake, that formulates and automates all repetitive but unavoidable procedures so time can be devoted to creation. izvanOkvira wishes to get out of that box once it is created and charter unknown lands; explore; play; leave no stone unturned; not be afraid to tear a sheet of paper; turn the starting presumptions upside down and start afresh; work passionately but calmly; work insanely but reasonably; respect the developer; respect the space; respect the people who will inhabit our houses; respect the nature we live and work in; explore and feel the space; hear the client and know what the client needs to hear. Be brave. Love.

izvan
okvira

RESIDENTIAL DESIGN

2018.

Residential building,
Rovinj, approx. 1,000 sqm,
preliminary design

Single family house in Stomorska,
Šolta, approx. 200 sqm,
main design

Single family house in Zagreb,
preliminary design – reconstruction

2017.

Single family house, Stomorska,
Šolta, approx. 200 sqm,
preliminary design

Residential building,
Island of Cres, approx. 400 sqm,
main design – reconstruction

2016.

Single family house I,
Zagreb, approx. 150 sqm,
preliminary and main design

2015.

M cottage, Zaprrešić,
preliminary and main design

S family house, Šalata,
Zagreb, approx. 350 sqm,
preliminary, main and detailed
design – renovation

M apartment building,
Rovinj, approx. 600 sqm,
preliminary design

B family house, Remete,
Zagreb, approx. 350 sqm,
preliminary design

2014.

Family house, Zagreb,
approx. 100 sqm, main
design – renovation

2013.

Res family house, Gradec,
approx. 130 sqm, preliminary,
main and detailed design

2011.

Family house, Maslinica,
Island of Šolta, approx. 400 sqm,
preliminary and main design

2010.

Family houses 1, 2 & 3,
Jurasi, Istria, approx. 400 sqm,
preliminary design

Family houses 2 & 3, Stare Staze,
Kršan, Istria, approx. 350 sqm,
preliminary design

Jukica family house, Zagreb,
approx. 350 sqm, preliminary,
main and detailed design

Residential neighbourhood,
Pelegrin, Island of Šolta,
approx. 11 x 400 sqm,
preliminary urban plan

O7 family house, Zagreb,
approx. 350 sqm, main and detailed
design – renovation

2009.

Tomas residential house, Sinj,
250 sqm, main design for Magnituda

Golubić residential house,
Gospić, 180 sqm,
main design for Magnituda

Mišković residential house,
Šibenik, 280 sqm,
main design for Magnituda

P residential houses, Zagreb,
400 sqm, preliminary and main
design for Magnituda

M residential house, Samobor,
250 sqm, preliminary design for
Magnituda – reconstruction and
renovation

H residential and office building,
Odra, 800 sqm, preliminary design
for Magnituda

First house, Gornja Podgora,
approx. 200 sqm,
preliminary design

Family house 1, Stare Staze,
Kršan, approx. 350 sqm,
preliminary design

Peharda family house,
Molvice, approx. 140 sqm,
preliminary design

O7 family house,
Zagreb, approx. 350 sqm,
preliminary design – renovation

Apartment building,
Zadarska Street, Zagreb,
approx. 1,425 sqm,
preliminary design

2008.

Chief designer: major design for
Mikolić residential house in Pula,
200 sqm, for Magnituda

Aliti house, Zagreb,
approx. 240 sqm,
preliminary design

G2 residential building, Gračani,
Zagreb, approx. 360 sqm,
main design for Ured ovlaštenog
arhitekta Igor Galović

6 villas, Kringa, Istria,
approx. 6 x 230 sqm,
main design

Bilić house, Samobor,
approx. 350 sqm,
preliminary design

Nikolić residential building
with a restaurant, approx. 930 sqm,
preliminary design for Ured
ovlaštenog arhitekta Igor Galović

Vučko residential building,
Šestine, Zagreb, approx. 400 sqm,
preliminary design

<p>Breškić residential building, Sesvete, approx. 420 sqm, main design for Ured ovlaštenog arhitekta Igor Galović</p> <p>Residential neighbourhood, Jurasi, Istria, approx. 15 x 400 sqm on approx. 3 ha plot, preliminary urban plan</p>	<p>Gilić residential building, Rudeš, Zagreb, 365 sqm, main and detailed design</p> <p>Summer house, Moslavina, approx. 400 sqm, preliminary design for Studio Milinović</p> <p>Hrastovac residential building, Zagreb, 600 sqm, preliminary design</p>	<p>2000.</p> <p>Residential building, Konjička Street, Zagreb, 760 sqm, preliminary, main and detailed design</p> <p>Miklečić family house, Buzetska Street, Zagreb, 230 sqm, addition</p> <p>D & E residential buildings, Dobri dol, Zagreb, 800 sqm, detailed design</p>
<p>2007.</p> <p>TOZ residential neighbourhood, Zagreb, approx. 60,000 sqm on 6.6 ha plot, preliminary urban plan with Miodrag Dragojević</p> <p>Residential building Optika, Podolje, Zagreb, approx. 837 sqm, preliminary design</p> <p>6 villas in Kringa, Istria, approx. 6 x 230 sqm, preliminary design</p> <p>Neighbourhood of 35 villas, Kršan, Istria, approx. 4.3 ha, preliminary urban plan</p> <p>2 residential buildings, Bukovac hill, approx. 2 x 400 sqm, preliminary design for Ured ovlaštenog arhitekta Igor Galović</p> <p>Residential building Breškić, Sesvete, approx. 420 sqm, preliminary design for Ured ovlaštenog arhitekta Igor Galović</p> <p>3 residential buildings, Novoselec, Sesvete, 3 x 390 sqm, preliminary and main design for Ured ovlaštenog arhitekta Igor Galović</p> <p>2 residential buildings, Perjavica, Zagreb, 2 x 500 sqm, main and detailed design</p> <p>G2 residential building, Gračani, Zagreb, 360 sqm, preliminary design for Ured ovlaštenog arhitekta Igor Galović</p>	<p>2005.</p> <p>Residential building, Šestine, Zagreb, 350 sqm, preliminary design</p> <p>4 villas, Dubrovnik, approx. 2,400 sqm, preliminary design</p> <p>Kovačević family house, Vinogradska Street, Zagreb, approx. 120 sqm, preliminary design</p>	<p>1999.</p> <p>D & E residential buildings, Dobri dol, Zagreb, 800 sqm, preliminary and main design</p> <p>Villa Klara, Kraljevac, Zagreb, 500 sqm, building management and designer's oversight for Studio 3LHD</p>
	<p>2004.</p> <p>Gilić residential building, Rudeš, Zagreb, 365 sqm, preliminary design</p> <p>Residential building, Šestine, Zagreb, 600 sqm, main and detailed design</p>	<p>1998.</p> <p>Villa Futter, Klosterneuburg, Austria, addition for Arhitekti Budanko i Witt-Doering</p> <p>Residential building, Stara Knežija, Zagreb, 1,200 sqm, preliminary, main and detailed design</p> <p>B & C residential buildings, Dobri dol, Zagreb, 900 sqm, interior and detailed design</p>
	<p>2003.</p> <p>Family house, Pelješac peninsula, preliminary design</p> <p>Radeljak apartment, Cvjetni square, Zagreb, 50 sqm, main design – renovation and addition</p>	<p>1997.</p> <p>Rosslar house, Vienna, Austria, competition entry with Arhitekti Budanko i Witt-Doering</p> <p>Hoppl family house, Vienna, Austria, for Arhitekti Budanko i Witt-Doering</p>
<p>2006.</p> <p>2 residential buildings, Perjavica, Zagreb, 2 x 500 sqm, preliminary design</p>	<p>2001.</p> <p>Šečković apartment, Ksaver hill, Zagreb, 176 sqm, reconstruction and addition</p>	<p>1996.</p> <p>Building addition, Annagasse, Vienna, Austria, for Arhitekti Budanko i Witt-Doering</p> <p>Expert supervision on numerous family houses in the village of Škabrnja, for the firm Arhitekt</p>

Omejec family house, Zagreb, 280 sqm, for Arhitekti Budanko i Witt-Doering	TOURIST DESIGN	2008.
Building addition, Hoyossgasse, Vienna, Austria, 900 sqm, for Arhitekti Budanko i Witt-Doering		Recreational facility, Lake Orešje, Sveta Nedjelja, approx. 70,000 sqm on 1,434,300 sqm plot, preliminary design
Building addition, Gentzgasse, Vienna, Austria, 800 sqm, for Arhitekti Budanko i Witt-Doering		Marina, Tisno, approx. 2,285 sqm, preliminary design
1995.		Hotel Lacroma Valamar, Dubrovnik, designer's supervision of reconstruction and building extension
Residential building, Supilova 6-8, Rijeka, 800 sqm, detailed design for Randić & Turato	Luxury residential villa in Ičići, Opatija, approx. 400 sqm, main and detailed design	Zir resort, Lovinac, Lika, approx. 1,800,000 sqm plot, master plan
Family house, Eurach, Germany, 500 sqm, for Arhitekti Budanko i Witt-Doering	Hotel Boškinac, island of Pag, approx. 5,700 sqm, preliminary, main and detailed design	St. Martin Harbour, Podstrana, preliminary urban plan
1993.	Bivouac, Hvar, approx. 20 sqm, preliminary design	Residential neighbourhood, Jurasi, Istria, approx. 15 x 400 sqm on approx. 3 ha plot, preliminary urban plan
Architectural survey of a residential building, T. Brezovačkog Street, for the Faculty of architecture, University of Zagreb	2017.	2007.
1992.	Luxury residential villa, Ičići, Opatija, approx. 400 sqm, preliminary and main design	Makarac resort, Jelsa, island of Hvar, approx. 20,000 sqm on 6.5 ha plot: preliminary urban plan
Family house, Bukovac hill, Zagreb, preliminary design with Alen Dragun	Luxury residential villa, Blace, Ploče, approx. 400 sqm, preliminary design	Hotel Lone, Rovinj, approx. 30,000 sqm, formwork plan for Studio 3LHD
	3 luxury residential villas, Veprinac, Opatija, 3 x approx. 400 sqm, preliminary designs	2006.
	Multicultural children and youth centre, Tkon, approx. 1,200 sqm, main design	Vela Zečja resort near Jelsa, island of Hvar, approx. 33,000 sqm on approx. 120,000 sqm plot, preliminary urban plan
	Hotela Thermia, Bizovac, approx. 50,000 sqm, collaboration on the detailed design – renovation	Plaza luxury resort near Hvar, island of Hvar, 45,000 sqm on 170,000 sqm plot, preliminary urban plan
	Temporary dwellings Bivouac, Island of Hvar, approx. 4 x 20 sqm, preliminary design	2003.
	2016.	Bjelolasica sports centre, competition entry with UPI-2M / 3LHD team
	Multicultural children and youth centre, Tkon, approx. 1,200 sqm, preliminary design	1998.
	2010.	Luxury summer resort, the island of Velika Smokvica, Rogoznica 38 buildings, 6,100 sqm on 172,805 sqm plot, preliminary urban plan
	Agricultural-recreational zone, Babina Greda, approx. 48.7 ha, preliminary urban plan	
	2009.	
	Neighborhood of 31 villas, Kršan, Istria, approx. 4.3 ha, preliminary urban plan	

ROVINJ 1

LOCATION
Rovinj, Istria

PHASE
preliminary design

USE
residential;
3-apartment building

SIZE
approx. 500 sqm

AUTHORS
Mirko Majić &
Ivo Skelin

PHOTO
Teodor Boch

YEAR
2016

Three apartments, one per floor. Back side of the house is intimate meant for sleeping. The front side, overlooking the street is a common space that houses the living room, the dining room and the kitchen. The location of the house made it logical to create a living space that is equally distributed between the inside and the outside. A circular communication opens up various possibilities. By sliding the terraces vertically, the house meanders trying to minimize its visual impact and its size. Developer's uncompromising care for details and construction quality continues to inspire.



FORTUNA

LOCATION

Šalata, Zagreb

PHASE

preliminary and
detailed design

USE

residential;
family house

SIZE

approx. 450 sqm

AUTHOR

Ivo Skelin

PHOTO

Robert Leš

YEAR

2014

There used to be a tavern called Fortuna there, a local bar that marked the lives of a lot of young people from Šalata. A separate garage used to house a couple of pinball machines, a Scramble, a Frogger... there used to be a jukebox, and the terrace filled with lush greenery used to be surrounded by a beautiful stone wall. Table cloths were, of course, made of gingham cloth. A lot of our pocket money was spent there...

There were two things that were obvious to us from the beginning: the birch tree must survive the construction, and the stone wall on the street corner needs to be preserved... and so the corner of the house is soft because of that... and spatial memory is preserved...



KRŠAN

LOCATION
Kršan, Istria

PHASE
preliminary design

USE
residential;
family house

SIZE
approx. 300 sqm

AUTHOR
Ivo Skelin

CLIENT
Istra ekskluziv d.o.o.

YEAR
2009

A scenario that includes a house for sale to a yet unknown buyer and a perceptible developer allows a designer significant freedom. A flat terrain, unlike a complex spatial configuration, enhances the design possibilities additionally. The result is a sculptural composition, a two-faced house with a public and a private face; concrete and wood in the house, solid rocks and vegetation around it. Green covering creeps over the wooden pergolas blurring the boundary between the house and its surroundings.



JURASI 1

LOCATION
Jurasi, Istria

PHASE
preliminary design

USE
residential;
family house

SIZE
approx. 400 sqm

AUTHOR
Ivo Skelin

CLIENT
Jurasi Exclusive
Villas d.o.o.

YEAR
2010

A summer house on a very steep plot overlooking the sea tried to make the best of the challenging circumstances... terraces placed one above the other gently slip away allowing each room a direct contact with the terrain and a spectacular view while the visual footprint of the house remains small.

Naked grey concrete will disappear in the lush vegetation and the house will become one with the nature...



JURASI 2

LOCATION

Jurasi, Istria

PHASE

preliminary design

USE

residential; family house

SIZE

approx. 400 sqm

AUTHOR

Tanja Kričkić

CLIENT

Jurasi Exclusive Villas
d.o.o.

YEAR

2010

The plot is situated on a steep terrain where only sea and sky can be seen.

The ground floor is completely open, almost set into the steep terrain. There are three sleeping cubes on the first floor — each tilted the other way. Each cube has a different view, its own piece of sea and sky. While the first cube opens up to the sunrise the last one only catches a glimpse of light reflecting from the sea surface... while the sun is setting down in one cube the other has already been veiled by complete darkness.

The same, yet completely different.



GRADEDEC

LOCATION
Gradec

PHASE
preliminary, main
and detailed design

USE
residential;
family house

SIZE
approx. 110 sqm

AUTHOR
Ivo Skelin

PHOTO
Robert Leš

YEAR
2013

When owners know what they want and when that is in line with the sensibility of the designer, the mutual ground is vast. A young family is building the Gradec house by themselves and in line with their circumstances and respecting their own values and aspirations. In a most sincere way, they are using love to create the Home, the Place where the child grows as the house grows and where the child is taught by example of respect, love, humbleness and diligence, life lessons almost forgotten in this new world. It is a joy to be a witness to this.



ŠTRIGE

LOCATION
Stara Drenčina

PHASE
preliminary, main and
detailed design

USE
production; fruit storage

SIZE
approx. 80 sqm

AUTHOR
Ivo Skelin

PHOTO
Nives Sertić

YEAR
2017

The house was imagined as the primordial shelter that, like a snail shell or the Fibonacci Spiral, sets up a spatial sequence starting from small private spaces, bathroom and bedrooms, continuing to bigger spaces, a public kitchen and a dining room, and then opening up to the outside with a big glass screen.

The following spatial layer is the covered porch that winds around the house. The porch, bordered by a semi-transparent screen made of thin hornbeam trees, is a space that, depending on its position in the layout and sun and view requirements, has a more or less defined inside – outside border that is filled by a flickering play of shadows. The heart of the house is opened, the light creeps in through the cracks.



BOŠKINAC HOTEL

LOCATION

Novalja, Pag Island

PHASE

preliminary, main and
detailed design of hotel
extensions, hotel
annexes and winery

USE

tourism

SIZE

approx. 3.700 sqm

AUTHORS

Ana Penavić &
Marijana Zlatec

CHIEF DESIGNER

Maja Vukušić

CLIENT

Cissa d.o.o.

YEAR

2018

When the client is so sincerely driven by passion and excellence the designers are happy to put in that extra mile; to hone, ponder, redo, research, return, rethink, transform one's conceptions and habits. The design of Boškinac hotel and winery was a journey that took us back to our roots, to the lust that fueled us when we just started architectural school before that lust was changed by the market and the limitations and rules of conventional and expected modes of behavior. The result is a complex that wants to be contemporary but decent to its surroundings, the context and the layers of history.



TISNO MARINA

LOCATION

Tisno

PHASE

preliminary design

USE

tourism

SIZE

approx. 2.285 sqm

AUTHOR

Ivo Skelin

COLLABORATOR

Andre Castro Vasconcelos

CLIENT

Prima Marina d.o.o.

YEAR

2018

The curved house form follows the curve of the cove, it encompasses and includes the focal point of the space. Wide, horizontal strokes easily evoke heroic examples of modernistic, contemporary, uncompromising spatial interventions that are not weighed down by layers of tradition that is marked by masses, heaviness and introversion. Porches and terraces protect the house from the sun and draw the outside space into the house.



IČIĆI 1

LOCATION
Ičići, Opatija

PHASE
preliminary, main
and detailed design

USE
tourism; rental villa

SIZE
approx. 385 sqm

AUTHOR
Ivo Skelin

CLIENT
Relax Class
Villas d.o.o.

YEAR
2017

The overgrown plot, luckily separated from the road by high trees, is situated on a mild slope with views of Cres to the South and Rijeka to the East. The assignment, a luxury contemporary villa for sale, provided considerable design freedom. The first impression was that it is imperative to preserve as many trees as possible. The second impression was that two big advantages of the plot need to be accentuated; the beautiful structure of rocks and the stunning views. The result is a curved house form that circles around the trees, the ground floor that flows over the rocks and the master bedroom, with a terrace and a small pool, on the highest floor that opens up to the spectacular views.



HOUSE OF IMMORTELLE

LOCATION

Vira, Hvar Island

PHASE

preliminary design

USE

tourism; family farm / boutique hotel

SIZE

approx. 1.400 sqm

AUTHOR

Ivo Skelin

CLIENT

Class Villas Hvar d.o.o.

YEAR

2018

A single-storey house with a basement is being built on a 30,000 square meter plot in the untouched nature. Permitted square footage, 400 square meters of ground floor and 1,000 square meters of basement, made us design a house with multiple scenarios. The house can become a luxury villa, a boutique hotel or a family farm with multiple uses. As the views to the ground floor are unprotected, we decided to break down the visible ground floor into a number of smaller cubes and so make the house seem smaller. Light and air penetrate the basement through three completely sunk atriums. Olives, immortelle and lavender are being planted in an irregular organic pattern on the plot and they embrace the outdoor facilities so the inhabitants have the opportunity to melt with the nature completely.



OLIVE GARDEN

LOCATION

Stari Grad, Hvar Island

PHASE

preliminary design

USE

tourism; family farm
with accommodations

SIZE

approx. 700 sqm

AUTHOR

Ivo Skelin

CLIENT

Olive Garden d.o.o.

YEAR

2019

30,000 square meters of existing olive grove is sloping towards Stari Grad with views of the town and Starigradsko polje. The plot is criss-crossed by drystone walls whose irregular shapes create an archetypal setting. The design is trying to continue that pattern by setting the house into the ground and making its slanted walls melt into the surrounding drystone walls. Depending on the sun and the wind life unfolds either on the covered terrace on the ground floor or on the open roof terrace with the pool, either way the house is completely open to both Stari Grad and Starigradsko Polje.



BUSINESS DESIGN

2018	HT billboard, Radnička building, Zagreb, preliminary design HT billboard, T-center Dubrovnik, preliminary design HT digital totem, Radnička building, Zagreb, preliminary design Administrative building, Rijeka, approx. 3,500 sqm, alterations to preliminary design	2010. HT LTDS, Varaždin, approx. 1,260 sqm, detailed design – reconstruction Bidd D warehouse, Zagreb, approx. 930 sqm, detailed design	Dugo Selo, approx. 4,500 sqm, preliminary design for UPI-2M Residential & office building with garage, Dubrovnik, approx. 11,700 sqm, preliminary design Lidl shopping centre, Kutina, approx. 1,500 sqm, preliminary design for UPI-2M
2017.	Gogreen market entrance, Zagreb, main design – reconstruction Hrvatski telekom totem, Sky office building, detailed design Međimurjeplet production and administrative building, approx. 27,000 sqm, Čakovec, preliminary and main design – reconstruction (generators and chilling units mounting)	2009. HT LTDS, Varaždin, approx. 1,260 sqm, preliminary and main design – reconstruction Bidd D warehouse, Zagreb, approx. 930 sqm, preliminary and main design Poreč centre shopping mall, Poreč, approx. 30,580 sqm, preliminary design	2004. Hooters restaurant, 600 sqm, preliminary design for UPI-2M Rinolit office building & warehouse, Sveta Nedelja, 1,250 sqm, preliminary design for UPI-2M Autoprigrorje shop, Sesvete, 60 sqm, preliminary and detailed design for UPI-2M
2016.	HT administrative building; facade reconstruction and window replacement, Rijeka, approx. 2,000 sqm, detailed design T-centre, Vukovarska, Zagreb, approx. 200 sqm, preliminary, main and detailed design, oversight by project designer – interior	2008. Boat & car showroom, Samobor, approx. 97,000 sqm, preliminary design HT LTDS Varaždin, approx. 100 sqm, preliminary & executive design for the adaptation of the energy block	2003. Martinkovac office building, Rijeka, 3,400 sqm, main and detailed design for UPI-2M Arena nova office building and warehouse, Zagreb, 2,900 sqm, preliminary, main and detailed design for UPI-2M
2013.	HT headquarters in Zagreb, HoTo tower, Zagreb, approx. 15,000 sqm, preliminary design and cost estimate – renovation HT call centre, Zagreb, approx. 10,000 sqm, preliminary and detailed design – renovation (with Mita projekt)	2007. T-HT New Telecom Centre, 21,000 sqm, competition entry	2002. Merkur shopping centre in Rijeka, 4,200 sqm: design for the location permit for, for UPI-2M Palainovka caffe winter garden, for UPI-2M HT IT Data Center Utrine, Zagreb, 5,200 sqm, preliminary, main and detailed design - addition, reconstruction and renovation for UPI-2M Turbo Limač totem, Turbo Sport, Žitnjak, Zagreb, for UPI-2M Gas station, for UPI-2M Office building, Martinkovac, Rijeka, 3,400 sqm, competition entry with UPI-2M, 1st prize
		2006. T-HT IT Data centre, Varaždin, 300 sqm, detailed design - reconstruction HT IT Data Centre Utrine, Zagreb, 5,200 sqm, detailed design for 3b phase – addition, reconstruction and renovation, for UPI-2M	
		2005. Kaufland shopping centre, Kutina, approx. 4,500 sqm, preliminary design for UPI-2M Kaufland shopping centre,	

2001.	HT office building, Kupska 2, Zagreb, 1,850 sqm, reconstruction and renovation for UPI-2M	INDUSTRIAL DESIGN	Uni Viridas biomass dryer plant, Babina Greda, approx. 2,320 sqm, preliminary and main design
	Metro cash & carry shopping centre, Jankomir, Zagreb, 14,500 sqm, main design and formwork plans for UPI-2M	2018	
	HT mobile warehouse, Velika Gorica, preliminary and detailed design for UPI-2M – reconstruction	Production and storage plant, Ivanić, approx. 600 sqm, preliminary, main and detailed design	2011.
2000.		Klijet – fruit storage, approx. 150 sqm, main and detailed design	Fassa cement factory, Kruševo, approx. 30,000 sqm, preliminary and main design and project management for IGH projektiranje
	ELLABO office building & warehouse, Zagreb, 3,000 sqm, detailed design	Klijet – fruit storage, Kupinec, approx. 50 sqm, main design	2008.
	Wienerberger exhibition pavilion, Zagreb fair, 130 sqm, preliminary and detailed design for UPI-2M	Boškinac wine-cellar, Novalja, approx. 850 sqm, main design	Warehouse and two overhangs, Klara, approx. 4,700 sqm, preliminary design
	Massive office building & warehouse, Zagreb, 2,000 sqm, main design for Studio 3LHD	2017.	Two warehouses, Klara, approx. 2,500 sqm, detailed design
		Timber drying shed for prostoria furniture factory, Sveti Križ Začretje, approx. 3,000 sqm, preliminary, main and detailed design	Fassa Bortolo plaster & lime factory, Obrovac, approx. 20,000 sqm, revisions to the main design for Ured ovlaštenog arhitekta Igor Galović
		Urban plans and regulation analysis for Europapir production and administrative building, Slavenska Avenija, Zagreb	Jadran film complex, Zagreb, approx. 1,800 sqm, relocation of warehouses
		2016.	2007.
		Stela timber drying plant, Babina Greda, 200 sqm, alterations to the main design	Eko-obrada metal recycling facility, Staro Čiče, approx. 9,000 sqm, preliminary design for Ured ovlaštenog arhitekta Igor Galović
		Uni Viridas greenhouse complex, Babina Greda, approx. 90,000 sqm, alterations to the main design	Two warehouses, Klara, approx. 2,500 sqm, main design
		Woodchip and timber drying plant, Grubišno polje, approx. 4,000 sqm, main design	2006.
		2015.	Fassa Bortolo plaster & lime factory, Obrovac, approx. 20,000 sqm, main design for Ured ovlaštenog arhitekta Igor Galović
		Uni Validus greenhouse complex, Babina Greda, approx. 60,000 sqm, preliminary and main design	Distribution centre, Jastrebarsko, approx. 82,000 sqm, preliminary design

2005.

CIOS metal recycling facility,
Jankomir, Zagreb,
approx. 1,850 sqm on
approx. 34,500 sqm plot,
preliminary, main and detailed
design

Two warehouses, Klara, Zagreb,
approx. 2,500 sqm,
preliminary design

2000.

GAL house factory, Zagreb,
10,000 sqm, preliminary design

RENEWABLE DESIGN

2018

Vitaljina Border crossing,
approx. 1,250 sqm, alterations
to detailed design, oversight

Multicultural children and youth
centre, Biograd na Moru,
approx. 1,200 sqm, consultants
(obtaining the building permit)

2017.

Pašin potok border crossing,
approx. 1,500 sqm, oversight
by project designer

2016.

MUP – PNUSKOK administrative
building, Rijeka, approx. 500 sqm,
oversight by project designer -
reconstruction

Čepikuće border crossing,
approx. 1,500 sqm, oversight by
project designer

2015.

Proscribing the conditions for
the construction segment of the
call for proposals for EU regional
development fund 2013 – 2020 (grant
scheme in Croatia) for the Ministry of
Entrepreneurship and Crafts of the
Republic of Croatia, consultant

Primorje Gorski Kotar County
SWAT and anti-explosives unit
building, Rijeka, approx. 2,730 sqm,
preliminary, main and detailed
design – reconstruction

9 Schengen border crossings for the
Ministry of Finance of the Republic
of Croatia, preliminary, main and
detailed design

Canopy over the stands,
Children's square – Špansko, Zagreb,
approx. 400 sqm, preliminary and
main design

2014.

Leader of architecture senior short-
term experts: technical assistance
for project preparation for EU
regional development 2013 – 2020
fund (grant scheme in Croatia) — 12
project proposals, SMEPASS II for
Ministry of Entrepreneurship and
Crafts of Republic of Croatia

9 Schengen border crossings for the
Ministry of Finance of the Republic
of Croatia, preliminary, main and
detailed design

2013.

Senior short-term expert: Evaluation
of building documentation and
permits — public call for show of
interest for technical assistance for
project preparation for EU regional
development 2013 – 2020 fund (grant
scheme in Croatia) — 87 project
proposals, SMEPASS II for Ministry
of Entrepreneurship and Crafts of
Republic of Croatia

Zabok police precinct roof
reconstruction, preliminary and
detailed design

Sisak-Moslavina County SWAT unit
building, Sisak, approx. 3,000 sqm,
preliminary and detailed
design – reconstruction

2012.

Design documentation for the
application for EU funding
competition for Anti organized
crime & corruption department in
Rijeka, MUP RH

2011.

Police precinct, Glina,
approx. 65 sqm, preliminary and
detailed design – renovation

First Police precinct, Rijeka,
approx. 40 sqm, preliminary and
detailed design – renovation

Anti-organized crime & corruption
department, Rijeka, approx. 550 sqm,
preliminary and detailed design –
renovation and reconstruction

2010.	INDUSTRIAL DESIGN	Cogeneration plant, Šopot near Benkovac, 5.0 MW, approx. 2,000 sqm, detailed design
Pedestrian bridge, Maribor, Slovenia, competition entry		
Contemporary art gallery, Maribor, Slovenia, approx. 18,000 sqm, competition entry		
2005.	2018	New engine room for the existing plant, Popovec, 500kW, approx. 100 sqm, preliminary design
Pool complex, Karlovac, approx. 10,000 sqm, main design coordination for UPI-2M	BOP Velika Ciglana, approx. 3,800 sqm, main and detailed design, oversight	Cogeneration plant, Grubišno polje, 5.0 MW, approx. 3,000 sqm, detailed design
Bus terminal, Rijeka, approx. 10,000 sqm, competition entry with UPI-2M	Geothermal power plant, Čađavica, approx. 2,000 sqm, preliminary design	Engine and boiler room annex for the existing Spin Valis cogeneration plant, Požega, 499 kW, approx. 400 sqm, main design - reconstruction
2004.	5 exploration wells, Čađavica, approx. 5,000 sqm, preliminary design	Velika 1 geothermal power plant, Velika Ciglana, 10 MW, approx. 3,800 sqm, preliminary, main and detailed design, alterations to the main design
Music Academy, Zagreb, approx. 6,000 sqm, competition entry with UPI-2M team	Geothermal power plant, Babina greda, approx. 2,000 sqm, preliminary design	Geothermal power plant pipeline and injection wells, Velika Ciglana, approx. 30,000 sqm, preliminary, main and detailed design, alterations to the main design
2003.	5 exploration wells, Babina greda, approx. 5,000 sqm, preliminary design	
Italian embassy pavilion, Zagreb, approx. 500 sqm, competition entry with UPI-2M	Cogeneration plant, Benkovac, 4.93 MW, approx. 1,200 sqm, main and detailed design	
1998.	Cogeneration plant, Grubišno polje, 5.0 MW, approx. 1,500 sqm – main and detailed design	2016.
Contemporary art museum, Salzburg, 2,000 sqm, competition entry with Arhitekti Budanko & Witt-Doering	Water mill wheel, addition to an existing building by the creek near Kupa river, preliminary design	Prima cogeneration plant, Garešnica, approx. 700 sqm, preliminary design
1997.	Small hydroelectric power plant, Ludbreg, alterations to the preliminary design	Small hydroelectric power plant Krupa, 1,600 kW, preliminary design
Contemporary art museum, Graz, competition entry with Arhitekti Budanko & Witt-Doering	Small hydroelectric power plant, Ploče, preliminary design	Velika 1 geothermal power plant, Velika Ciglana, approx. 43,139 sqm, preliminary, main and detailed design
Opera house, Linz, competition entry with Arhitekti Budanko & Witt-Doering	2017.	Geothermal power plant pipeline, Velika Ciglana, approx. 30,000 sqm, preliminary, main and detailed design, oversight by project designer
1996.	Arbor transfero biomass cogeneration plant, Delnice, 0.5 MW, approx. 300 sqm, main and detailed design	Legrad 1 exploration well, approx. 25,000 sqm, preliminary design
Zagreb police department building, approx. 5,000 sqm, competition entry with Njirić & Njirić	Pilana Krasno biomass cogeneration plant, Krasno, 0.5 MW, approx. 700 sqm, alterations to the main design	Legrad 2 exploration well, approx. 25,000 sqm, preliminary design
Kiosk, lake Jarun, Zagreb, 6 sqm	Hydroelectric power plant, Ludbreg, 310 kW, preliminary design	
Gaje Bulata square, Split, competition entry with Arhitekti Budanko & Witt-Doering		

Legrad 3 exploration well, approx. 25,000 sqm, preliminary design	Spin Valis biomass cogeneration power plant, Požega, 1.5 MW, approx. 2,000 sqm, alterations to the main design	Solana Pag salt factory biomass boiler room, island of Pag, approx. 900 sqm, preliminary, main and detailed design
Lunjkovec-1 exploration well, approx. 25,000 sqm, preliminary design	Cropellets energija biomass cogeneration power plant, Cugovec, 1 MW, approx. 735 sqm, preliminary and main design	Design documentation for the application for EU funding competition for biomass heating system of the City of Ozalj
Lunjkovec-2 exploration well, approx. 25,000 sqm, preliminary design	Pilana Krasno biomass cogeneration power plant, Krasno, 0.5 MW, approx. 807 sqm, preliminary and main design	Unicredit Zagrebačka banka office buildings Jankomir 1 and 2, Samoborska cesta, Zagreb, approx. 7,750 sqm, preliminary and detailed design
Ferdinandovec-1 exploration well, approx. 25,000 sqm, preliminary design	Lepa 1 biomass cogeneration power plant, Lepoglava, 0.3 MW, approx. 400 sqm, preliminary design	Biomass heating system for town of Ozalj, Ozalj, preliminary and detailed design
Ferdinandovec-2 exploration well, approx. 25,000 sqm, preliminary design	Lepa 2 biomass cogeneration power plant, Lepoglava, 0.5 MW, approx. 592 sqm, preliminary design	
Kotoriba-1 exploration well, approx. 25,000 sqm, preliminary design	Velika 1 geothermal power plant, Velika Ciglana, 11 MW, preliminary and main design	2010.
Kotoriba-2 exploration well, approx. 25,000 sqm, preliminary design		Marija 1 geothermal power plant, Velika Ciglana, approx. 3,000 sqm, main design
Rečica geothermal power plant, approx. 32,000 sqm, preliminary design		2009.
Rečica KA-2 and KA-3 exploration wells, approx. 25,000 sqm, preliminary design		Marija 1 geothermal electrical plant, Velika Ciglana, approx. 3,000 sqm, preliminary design
2015.	2014.	
Uni Viridas biomass cogeneration power plant, Babina Greda, 11 MW, approx. 2,320 sqm, alteration to the main design	Energostatik biomass power plant, Grubišno Polje, 5 MW, approx. 3,000 sqm, preliminary and main design	
Prvo plinarsko društvo biomass cogeneration power plant, Ploče, 5 MW, approx. 2,100 sqm, preliminary and main design	Spin Valis biomass cogeneration power plant, Požega, 1,5 MW, approx. 2,000 sqm, main and detailed design	
Prvo plinarsko društvo biomass cogeneration power plant, Nova Gradiška, 2 MW, approx. 1,950 sqm, preliminary and main design	Town of Josipdol biomass powered hot-water boiler-room, Josipdol, approx. 100 sqm, preliminary and detailed design	
Luka Ploče energija biomass cogeneration power plant, Ploče, 5 MW, approx. 2,100 sqm, preliminary and main design	2013.	
	Solana Pag biomass boiler room, island of Pag, approx. 900 sqm, construction oversight	
	2012.	
	Collaborator: supporting works & consulting for Univiridas biomass power plant in Babina Greda, under construction	

UTRINE

LOCATION

Utrine, Zagreb

PHASE

preliminary, main and
detailed design of
reconstruction

USE

business; IT data center

SIZE

approx. 5.200 sqm

AUTHOR

Ivo Skelin

CHIEF DESIGNER

Miomir Kliman

PHOTO

Miljenko Hegedić

CLIENT

HT Hrvatski telekom d.d.

YEAR

2008

The largest data centre in Croatia, the design and construction 8 years apart, construction in 6 phases, 4 electrical substations with a total of 4 MW of power installed, 3 diesel generators, chillers with more than 2 MW of thermal energy... all negligible compared to the opportunity to try to improve a valuable piece of industrial architecture of days gone by.



MARTINKOVAC

LOCATION

Martinkovac, Rijeka

PHASE

preliminary, main and
detailed design

USE

business

SIZE

approx. 3.400 sqm

AUTHOR

Ivo Skelin

CHIEF DESIGNER

Alen Leo Pleština

PHOTO

Vanja Šolin

CLIENTS

Alarmautomatika, Ventex,
Fast Forward

YEAR

2004

Three owners, each needs to house three uses, three floors and three volumes... decomposing the space vertically and horizontally so the house would be organically truthful. A spectacular view to the Kvarner bay framed by the ribbons on the upper level.



HT KUPSKA

LOCATION

Kupska, Zagreb

PHASE

preliminary, main and
detailed design of
reconstruction

USE

business

AUTHOR

Ivo Skelin (UPI 2M)

CLIENT

HT Hrvatski telekom d.d.

PHOTO

Vanja Šolin

YEAR

2002

A thorough reconstruction of an office building and the design of the surroundings, gateway made of hand-made cor-ten steel, a newly created terrace for the basement restaurant, a canopy over the dumpster standing for a broad brush-stroke, the composition of the foyer and a steel staircase that rocks magnificently while you walk on it... it has all happened with full understanding and support by the owner.



PROSTORIA

LOCATION

Sveti Križ Začretje

PHASE

preliminary, main
and detailed design

USE

production;
timber drying shed

SIZE

approx. 3.000 sqm

AUTHOR

Ivo Skelin

PHOTO

Robert Leš

CLIENT

prostoria d.o.o.

YEAR

2018

Timber drying shed within a furniture plant observes all requirements;

it blocks direct sunlight, allows wind and draft, follows organizational and traffic logic, its spans are rational, its proportions balanced, its materials noble and there is a trick to its cuteness.



FASSA

LOCATION

Kruševo near Obrovac

PHASE

preliminary design

USE

production;
cement factory

SIZE

approx. 20.000 sqm

PROJECT MANAGER

Ivo Skelin

CHIEF DESIGNER

Jure Radić

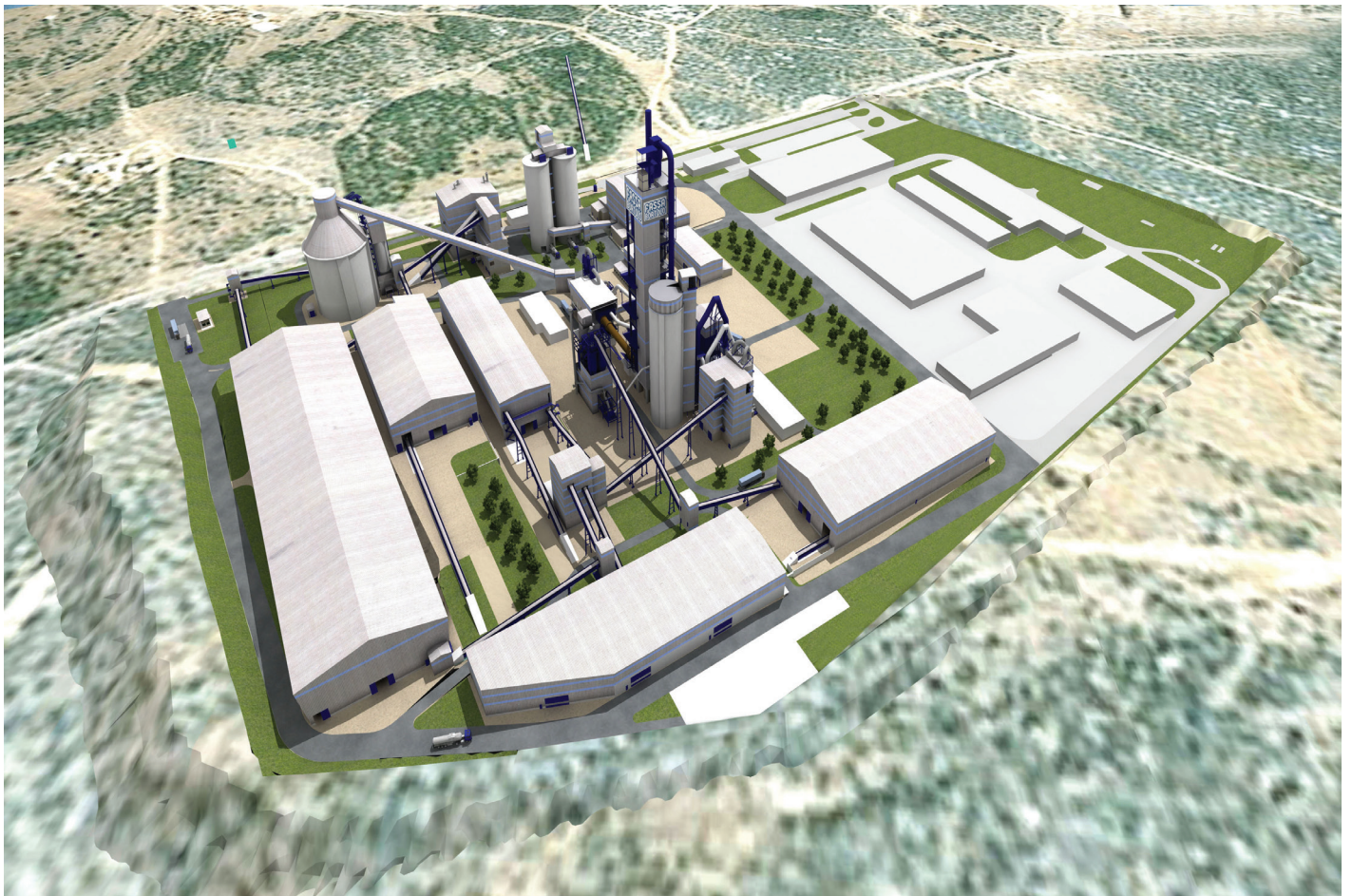
CLIENT

Fassa d.o.o.

YEAR

2012

A cement factory is a very complex technological system so it requires complex procedures when planning the design process... developers and their technologists, numerous design offices and their engineers, a number of public authorities and their prescribed requirements, two ministries... developing a preliminary design and obtaining the location permit for such a spatial intervention in real time has been quite an organizational and engineering undertaking of a number of committed individuals.



CIOS

LOCATION

Jankomir, Zagreb

PHASE

preliminary, main and
detailed design

USE

production; metal recycling
plant

SIZE

approx. 34.500 sqm

AUTHOR

Ivo Skelin

CHIEF DESIGNER

Mirjana Smoljo

CLIENT

Cios d.o.o.

YEAR

2005 / 2006

The design took environment into account by observing all regulations and fulfilling all environmental, water and air preservation and noise reduction requirements. Environmental care has been exercised through careful and consequential construction, the usage of the building and recycling significant amounts of metal waste properly.



BORDER CROSSINGS

LOCATION
Croatia

PHASE
preliminary, main
and detailed design

USE
public

AUTHOR
Ivo Skelin

CHIEF DESIGNER
Damir Keglević

PROJECT MANAGER
Danijel Zdolc

CLIENT
Croatian Ministry
of Finance

YEAR
2017

Out of nine designed border crossings six have been constructed: Cera, Čepikuće, Vukov Klanac, Vitaljina, Gejkovac and Pašin Potok. As opposed to the simplicity and antiquity of metaphoric implications of border crossings, design briefs were complex, formed by a number of security demands, protocols and schedules. Apart from managing to handle the procedural complexity of designing public buildings, the most important part of the process was to incorporate the border crossings into real-life and specific topographies and match them to real places and views.



BRIDGE

LOCATION

Maribor, Slovenia

PHASE

preliminary design,
competition entry

USE

public;
pedestrian bridge

AUTHOR

Ivo Skelin

YEAR

2010

A bridge is a pathway; the shortest distance between two points; a structure that connects two riverbanks trying to grasp the intangible. But a bridge can also be a place, a meeting point, a space to rest.

Two riverbanks, two paths that meet and go their separate ways, creating two places, one more isolated than the other, open to the river and to themselves.



GALLERY

LOCATION

Maribor, Slovenia

PHASE

preliminary design,
competition entry

USE

public; contemporary art
gallery

SIZE

approx. 18.000 sqm

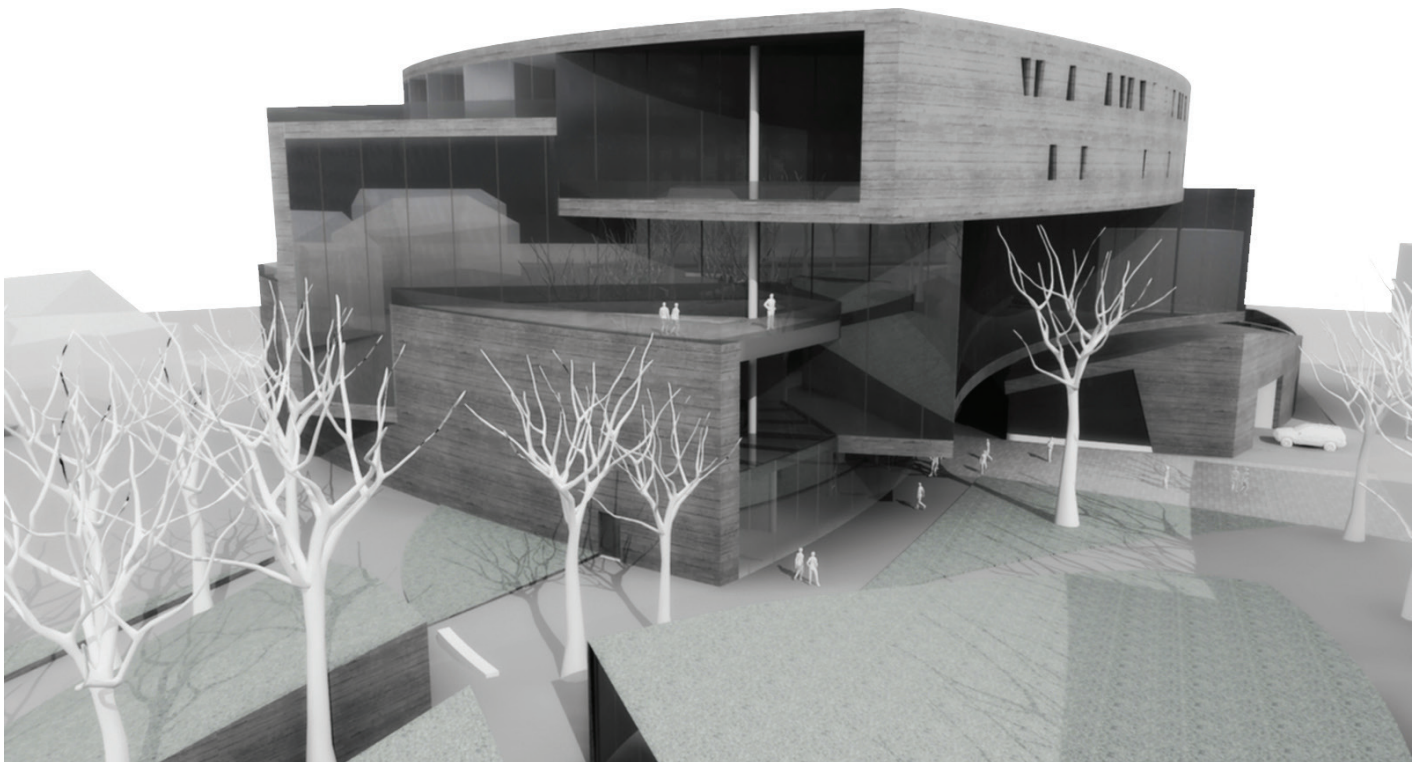
AUTHOR

Ivo Skelin & Maja Vukušić

YEAR

2010

The basic concept of the building is a composition of three meanders, each created by two differently curved concrete slabs and one wall. They interact with each other creating a space that fluidly moves around them. Since the slabs and the walls are supported by a grid of columns, there are no restrictions other than the function.



CIGLENA GEOTHERMAL POWER PLANT

LOCATION

Velika Ciglena

PHASE

preliminary, main and
detailed design

USE

production; geothermal
power plant

SIZE

17 MW

AUTHOR

Maja Vukušić

CHIEF DESIGNER

Anđelko Mikulandrić

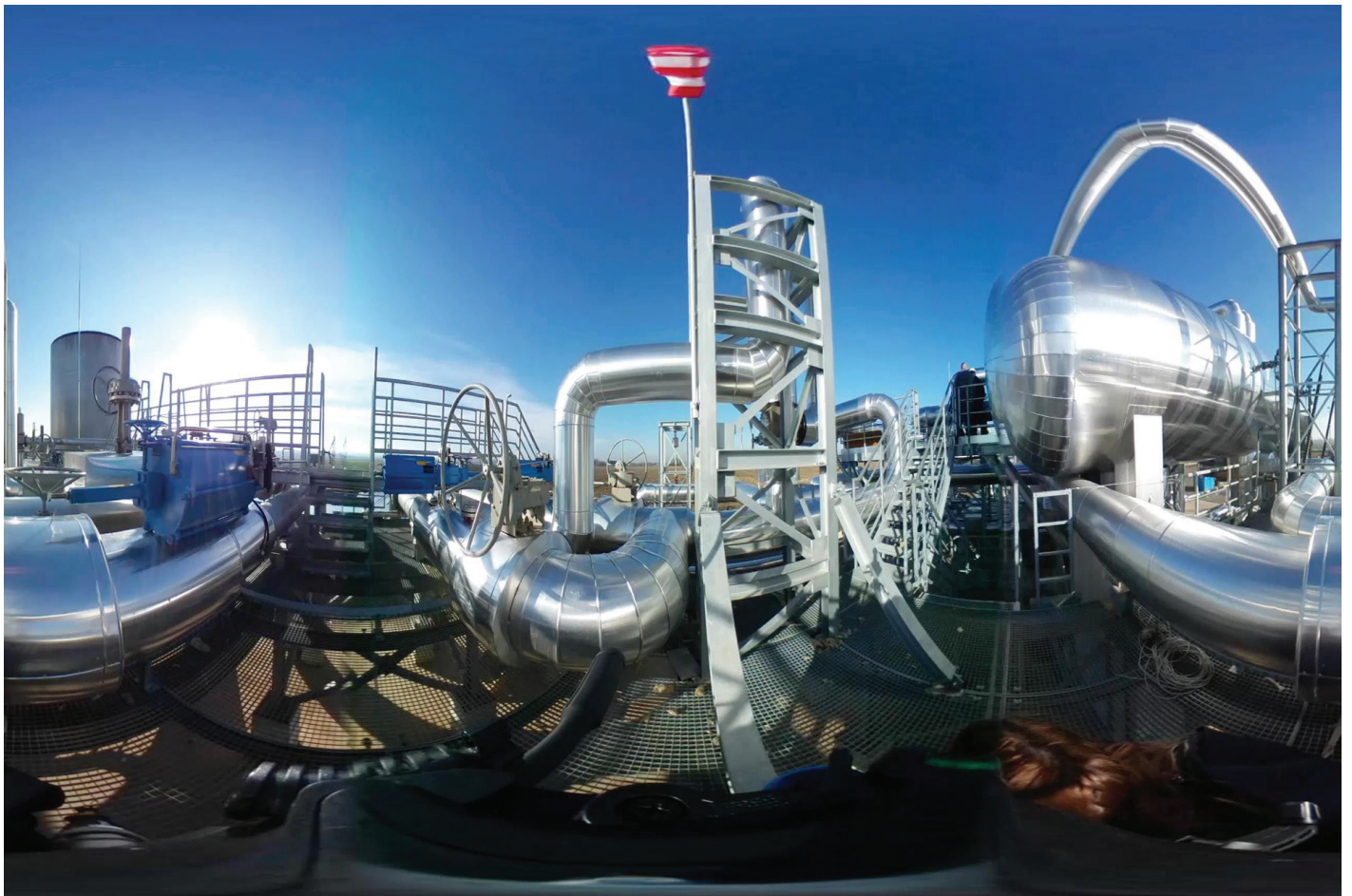
CLIENT

Geoen d.o.o.

year

2018

Velika Ciglena 17,5 MW geothermal powerplant is the first Organic Rankine Cycle geothermal powerplant in Croatia and the biggest such in Europe. It has been constructed near Bjelovar in the open country surrounded by corn fields. The plant is fueled by steam and 170°C hot water in order to produce electrical power and supply it to the grid. A mining plant with a borehole consisting of production and injection wells and pipelines is also a part of the geothermal power plant. The complexity of managing geothermal fluids, which is the essence of this complex project, is mirrored in an intricate, harmonic composition of mechanical elements, thus becoming the basis for the industrial design aesthetic.



BABINA GREDA COGENERATION PLANT

LOCATION

Babina Greda

PHASE

preliminary, main
and detailed design

USE

production; biomass
cogeneration power plant

SIZE

11MW

ARCHITECTURE DESIGNER

Goran Obranović

CHIEF DESIGNER

Slaven Pavlović

PHOTO

Robert Leš

YEAR

2015

Architecture in the service of mechanical engineering – designing an industrial plant in the open country lacking a pronounced context, led by the logic of technology and technological processes. A sequence of concrete and steel buildings and structures constrained by transport, storage and combustion of wood biomass for the purpose of producing electrical power and heat. Industrial design in its most sincere form, void of all unnecessary elements.



SPIN VALIS COGENERATION PLANT

LOCATION

Požega

PHASE

preliminary, main
and detailed design

USE

production; biomass
cogeneration power plant

SIZE

1.7 MW

AUTHORS

Goran Obranović &
Ivo Skelin

CHIEF DESIGNER

Marijan Hohnjec

YEAR

2014

When you start a project with the construction already underway then there is “no time Toulouse”...

From “Hello” to the revised foundation formwork and reinforcement plans in three days...

After that, a military style operation...
Electricity has flowed on time.



GRUBIŠNO POLJE COGENERATION PLANT

LOCATION

Grubišno Polje

PHASE

preliminary, main
and detailed design

USE

production; biomass
cogeneration power plant

SIZE

5 MW

AUTHOR

Goran Obranović

CHIEF DESIGNER

Slaven Pavlović

PHOTO

Robert Leš

YEAR

2018

Cogeneration plant on the outskirts of Grubišno Polje is a part of a larger facility that also includes a timber drying plant. The focus of the facility is placed on a large building that houses the boiler and the generator. The building is surrounded by various structures that are included in electrical and thermal power production processes. The coldness of concrete and steel is softened by the use of bright primary colors for the details and the use of warm brown hues, the color of primary raw materials — wood chips, on the finish materials.



INTERIOR DESIGN

2018.

T centre, Pula (city),
approx. 80 sqm, preliminary,
main and detailed design

T centre, Bjelovar,
approx. 80 sqm, preliminary,
main and detailed design

T centre, Pula (Stoja),
approx. 80 sqm, preliminary,
main and detailed design

T centre, Dubrovnik,
approx. 80 sqm, preliminary,
main and detailed design,
billboard design

T centre, Radnička, Zagreb,
approx. 100 sqm, preliminary,
main and detailed design

Bussines showroom, Radnička,
Zagreb, approx. 300 sqm,
preliminary, main, detailed and
interior and landscape design

Bonbon kiosk east,
approx. 15 sqm, preliminary
and detailed design

Bonbon kiosk west,
approx. 15 sqm, preliminary
and detailed design

Bonbon shop, School of Economy,
Zagreb, approx. 100 sqm,
preliminary and detailed design

Apartment in Zagreb,
approx. 81 sqm, preliminary
and detailed design

Pan Net office,
approx. 450 sqm, preliminary
and detailed design – phase II
of reconstruction

Apartment in Zagreb,
approx. 140 sqm, preliminary and
detailed design – reconstruction

Apartment in Split,
approx. 74 sqm, preliminary and
detailed design – reconstruction

Apartment in Zagreb,
approx. 76 sqm, preliminary and
detailed design – reconstruction

2017.

Shopping mall Ambienta
Exportdrvo, Novi Zagreb, Zagreb,
architectural survey of interior,
analysis and study

HT offices, Ozaljska, Zagreb,
approx. 300 sqm, preliminary
and detailed interior design

Pan-net Croatia offices, Zagreb,
approx. 450 sqm, preliminary and
detailed interior design

T centre Korzo, Rijeka,
approx. 200 sqm, preliminary,
main and detailed interior design,
billboard design and designer's
oversight

T shop Lumini, Varaždin,
approx. 60 sqm, preliminary, main
and detailed interior design and
designer's oversight

T shop ZTC, Rijeka,
approx. 45 sqm, preliminary,
main and detailed interior design
and oversight of reconstruction
by the designer

Single family house Ž,
Bedekovčina, approx. 140 sqm,
preliminary interior design

Caffe bar Divas, Vlačka ulica,
Zagreb, approx. 40 sqm,
preliminary and main interior
design

Apartment S, Zagreb,
approx. 150 sqm,
preliminary interior design

Apartment G, Zagreb,
approx. 60 sqm, preliminary
and detailed interior design of
a part of the apartment

Vacation house T, Šolta,
approx. 60 sqm, preliminary
and detailed interior design
of a part of the house

Apartment E, Zagreb,
approx. 80 sqm, main design
for the conversion

Apartment K, Zagreb,
approx. 95 sqm, preliminary and
detailed interior design

Apartment B, Zagreb,
approx. 90 sqm,
preliminary interior design

Single family house I,
Zagreb, approx. 80 sqm,
preliminary design – reconstruction

T centre, Iblerov Trg, Zagreb,
approx. 200 sqm, preliminary
interior design

T centre Dubrava, Zagreb,
approx. 200 sqm,
preliminary interior design

T centre Tower, Rijeka,
approx. 180 sqm,
preliminary interior design

T centre Bjelovar,
approx. 80 sqm,
preliminary interior design

T centre Joker, Split,
approx. 150 sqm,
preliminary interior design

2016.

Feasibility study of Combis
and Iskon relocation,
approx. 12.000 sqm,
consulting

Feasibility study of Novartis
relocation, approx. 3.600 sqm

Novartis Offices, Zagreb,
approx. 3.600 sqm,
preliminary design

N apartment, Zagreb,
approx. 65 sqm, preliminary
and detailed interior design

M business premises, Zagreb,
approx. 60 sqm, preliminary and
detailed interior design

<p>T centre, Šibenik, approx. 100 sqm, preliminary, main and detailed interior design, billboard design and designer's oversight</p> <p>T centre Avenue mall, Zagreb, approx. 150 sqm, preliminary, main and detailed interior design, billboard design and designer's oversight</p> <p>T centre Split, approx. 200 sqm, preliminary, main and detailed interior design, billboard design and designer's oversight – reconstruction</p> <p>Bussines Competence Center, Sky office building, Zagreb, approx. 80 sqm, detailed interior design and designer's oversight</p> <p>T centre, Vukovarska, Zagreb, approx. 200 sqm, preliminary, main and detailed interior design and designer's oversight – reconstruction</p>	<p>2014.</p> <p>Apartment, Zagreb, approx. 140 sqm, preliminary and detailed design – renovation</p> <p>Manufacturing and office building, Varaždin, approx. 350 sqm, preliminary and detailed design – renovation</p> <p>T-centre, Pula, approx. 230 sqm, preliminary and detailed design</p> <p>T-centre, Čakovec, approx. 60 sqm, preliminary design and bill of quantities</p> <p>2013.</p> <p>HT call centre, Zagreb, approx. 10,000 sqm, preliminary and detailed design – renovation with Mita projekt</p> <p>M apartment M, Vienna, Austria, approx. 150 sqm, preliminary and detailed design</p> <p>T-centre Cvjetni, Trg Petra Preradovića, Zagreb, approx. 200 sqm, preliminary, main and detailed design</p> <p>2012.</p> <p>Unicredit Zagrebačka banka headquarters, main square, Zagreb, approx. 2,500 sqm, preliminary and detailed design – reconstruction and interior design</p> <p>Unicredit Zagrebačka banka Jankomir 1 & 2 office buildings, Samoborska cesta, Zagreb, approx. 7,750 sqm, preliminary and detailed design – renovation</p> <p>2011.</p> <p>Vešmašina store, Opatovina, Zagreb, approx. 64 sqm, preliminary and detailed design</p> <p>T-centre, Stepinčeva, Osijek, approx. 100 sqm, preliminary and detailed design</p>	<p>T-centre, Trgocentar, Zabok, approx. 200 sqm, preliminary, main and detailed design</p> <p>M apartment, Nova Ves, Zagreb, preliminary and detailed design – reconstruction</p> <p>INA-MOL gas stations, approx. 150 sqm, preliminary design for Institut IGH</p> <p>2010.</p> <p>I residential house, Zagreb, 380 sqm, preliminary and detailed design – reconstruction</p> <p>P office, Zagreb, 140 sqm, preliminary & detailed design – reconstruction</p> <p>B apartment, Zagreb, 65 sqm, preliminary & detailed design – reconstruction</p> <p>T-centre, Portanova, Osijek, approx. 100 sqm, preliminary, main and detailed design</p> <p>T-centre, Lumini, Varaždin, approx. 100 sqm, preliminary, main and detailed design</p> <p>T-centres Karlovac, Križevci, Rijeka & Split, bills of quantities</p> <p>T-centre, Barčičeva street, Rijeka, approx. 150 sqm, preliminary and detailed design</p> <p>2009.</p> <p>25 T-centres, 120 sqm, architectural surveys</p> <p>Mediterraneo restaurant, Zagreb, approx. 350 sqm, preliminary design</p> <p>2008.</p> <p>C apartment, Zagreb, 140 sqm, preliminary and detailed design – reconstruction, for AAG design centre</p> <p>S residential house, Zagreb, 400 sqm, preliminary and detailed design – reconstruction, for AAG design centre</p>
--	---	--

2004.

Hooters restaurant,
600 sqm, preliminary design,
for UPI-2M

Jokić doctor's office,
Slovenska Street, Zagreb,
50 sqm, renovation, for UPI-2M

RTL television reception
area & general manager's office,
approx. 200 sqm, interior design,
for UPI-2M

2002.

Jukebox Melita play,
&TD Theatre, set design

Two apartments in Zelengaj,
Zagreb, 2 x 150 sqm, preliminary
design – reconstruction and
addition, for UPI-2M

2001.

HT office building, Kupska 2,
Zagreb, 1,850 sqm,
reconstruction, UPI-2M

Šecković apartment,
Ksaver hill, Zagreb, 176 sqm,
reconstruction and addition

2000.

Roto winery, Gajnice, Zagreb,
preliminary design and furnishing

Marušić apartment, Savska Street,
Zagreb, 70 sqm, reconstruction

MTC department store, Ilica,
Zagreb, 400 sqm, detailed design
and designer's oversight, for UPI-2M

1999.

Skelin apartment, Andrijevićeva
Street, Zagreb, 95 sqm,
interior design

Vila Klara, Kraljevac,
Zagreb, 500 sqm, building
management and designer's
supervision, for Studio 3LHD

1997.

Pub, Petrinjska 9, Zagreb,
110 sqm, interior design,
with Sanja Špoljaric

Europa restaurant, Jurišićeva,
Zagreb, 120 sqm, preliminary
interior design

1996.

Expert supervision on numerous
family houses in the village of
Škabrnja, for the firm Arhitekt

Budanko apartment,
Medulićeva Street, Zagreb,
120 sqm, reconstruction, for
Arhitekti Budanko & Witt-Doering

1994.

Mc Donald's, Zagreb,
design documentation for Modul

1992.

Butik jedan Vlaška dva shop,
interior design

ZABA HEADQUARTERS

LOCATION

main square, Zagreb

PHASE

preliminary and detailed
design of reconstruction
and interior design

USE

offices

SIZE

approx. 2.500 sqm

AUTHORS

Iva Šilović Grabovac &
Krešimir Haramina

YEAR

2013

A number of complex functions, contemporary equipment and strict security systems had to be incorporated into the given spatial framework and the historical flair of the building had to be preserved while giving the space a contemporary, elegant and strong but unassuming atmosphere. By using wooden wall panels that run through the space in a regular grid, rich lightning, curtains that are a tad dramatic and classical pieces of furniture we tried to create a stylish yet deliberate space where the users and visitors will both feel comfortable while surrounded by a serious, reliable business atmosphere.



FLAGSHIP T-COM STORE CVJETNI

LOCATION

Cvjetni trg, Zagreb

PHASE

preliminary, main and detailed design of reconstruction and interior design

USE

retail

SIZE

approx. 200 sqm

AUTHORS

Maja Vukušić &
Daniel Taraczky

CLIENT

HT Hrvatski telekom d.d.

YEAR

2014

The store has been conceived as an open space providing as much interactive experience for the buyer as possible. Internal ineffective gallery has been removed and the basement and ground floor have been connected by an elevator in a glass shaft and as a result an open space has been created. Deutsche Telekom Group standards have been used for the interior design but historical elements have been preserved in the space. Renewing the long-hidden brick vaults, exactly what makes Cvjetni store unique among DT stores, has proven to be the most challenging part of the preservation of historical elements. Removing the aluminum canopy and the grid façade managed to remove the barrier between the outside and the inside space which made the lively scenery and atmosphere of Cvjetni trg an integral part of the store.



VEŠMAŠINA

LOCATION
Zagreb

PHASE
preliminary and detailed
design of reconstruction
and interior design

USE
fashion store

SIZE
approx. 130 sqm

AUTHORS
Ivo Skelin &
Andrea Ercegović

PHOTO
Nikola Zelmanović

YEAR
2014

An openminded and perceptive owner with a formed idea of the final image and a strong motivation to create a relaxed and hip place has been an ideal co-author of the space where bare grey concrete shell has become a backdrop for lively clothes that are more an attitude than a status statement.



PHASE
preliminary, main
and detailed design
of reconstruction

USE
family house

SIZE
approx. 200 sqm

AUTHOR
Ivo Skelin

YEAR
2011

When two friends, the owner and the designer, share the same sensibility and an equal passion for creation and shaping of space, then countless afterwork meetings in Sedmica, together with a pen and a piece of paper provided by the waiter, are unavoidable. As soon as everybody arrived from the maternity ward to the freshly painted and thoroughly reconstructed house and its addition, this became The Home to a wonderful family, a home in which kids grow up and parents grow old, piling a layer on top a layer of love and memories all around the space.



APARTMENT C

LOCATION

main square, Zagreb

PHASE

preliminary and detailed
interior design

USE

residential

SIZE

approx 130 sqm

AUTHOR

Iva Šilović Grabovac

YEAR

2009

Every architect's dream is to be given a carte blanche and a minimal set of constraints by the client. The space has been arranged as a whole that can be divided into smaller sectors if necessary. The bathroom is an integral part of the bedroom and the two can be divided only by a curtain. Office and dining area, living room and kitchen all intertwine and create a unique space. If it becomes necessary to separate the spaces, sliding doors can be drawn out from behind the backdrop of dark gray wooden wall panels and built-in wardrobes. While not in use, the sliding doors remain completely invisible and allow the free flow of space.



IT OFFICE

PHASE
preliminary interior
design

USE
offices

SIZE
approx. 400 sqm

AUTHOR
Ivo Skelin

COLLABORATOR
Mirko Majić

YEAR
2018

The preliminary design wanted to minimize the negative aspects of the open-space office concept by setting up groups/clusters that are mutually separated by divisions/wardrobes, carefully positioned acoustic absorption panels and phone booths that turn into micro-offices for teleconferences and brief meetings. The design juxtaposes the coldness of a contemporary office building and warm pastel colours and soft lines of lounge chairs in relaxation groups and brief informal meeting setups that overlap with passageways, as well as an abundance of house plants and warm lowlights.



LONDON

LOCATION
London, UK

PHASE
preliminary and detailed
design of reconstruction
and interior design

USE
residential

SIZE
approx. 140 sqm

AUTHOR
Ivo Skelin

YEAR
2019

A couple's apartment with a panoramic view of the Thames is stripped naked so its potentials could be realized. The double height all up to the roof is being opened up and a glassed-in gallery, that will house the master bedroom, is put in to hover over the naked steel beams that link the gallery and the two staircases that create a circular communication. The kitchen as the guts of the apartment and the living room soaking in the Thames and the Canary Wharf. Her piano on one side and on the other his HI-FI and a lot of records. Only deep plume colour will be replicated from their old apartment.

